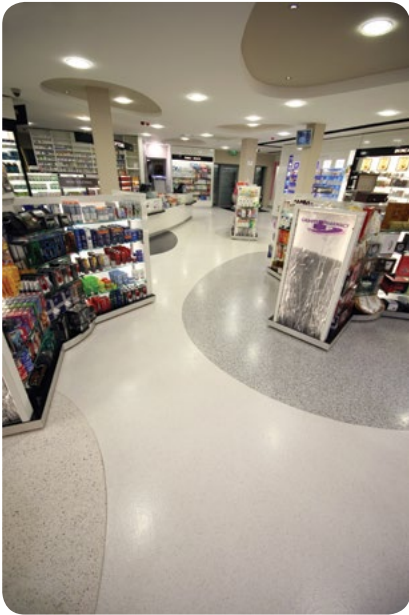




FLOWFAST

- ▶ A range of MMA acrylic floor coatings designed to offer a decorative and highly durable floor finish that is fully serviceable under a quick turnaround.

Flowfast Range Technical Profile

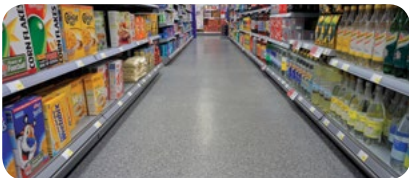


Ready to use just two hours after application, Flowcrete's speediest flooring solution delivers unrivalled installation and cure times as well as an eye-catching finish.

Available in a creative mix of colours and finishes, Flowfast is well-suited to the commercial sector, where it has been gaining speed at a number of airports, shopping centres, residential developments, underground rail stations, stadia buildings and arena complexes across the globe.

Offering chemical, wear and slip resistance, Flowfast is also a popular choice with the food processing, mechanical, chemical and electronic goods industries where it's seamless, durable finish offers an excellent platform for hygiene and heavy industry.

Application Suitability



Retail



Education



Food & Beverage



Leisure



Offices



Healthcare

Chemical Resistance

ACIDS		ALKALIS		ORGANIC		OTHER			
Acetic Acid 25%	✓	Caustic Soda	✓	Petroleum	✓	Crude Oil	✓	Vinegar	✓
Hydrochloric Acid 37%	✓	Potassium Hydroxide 50%	✓	Formaldehyde 37%	✓	Calcium Chloride	✓	Wine	✓
Lactic Acid 90%	✓	Lime Milk	✓	Diesel	✓	Bleach	✓	Beer	✓
Nitric Acid 10%	✓	Sodium Hydroxide 30%	✓	Kerosene	✓	Blood	✓	Ammonia	✓
Sulphuric Acid 50%	✓	Ammonia 10%	✓	White Spirit	✓	Hydrogen Peroxide 30%	✓	Mineral Oil	✓
Tartaric Acid 50%	✓	Aluminium Hydroxide	✓	Turpentine	✓	Sodium Chloride	✓	Antifreeze	✓

*Third Party Test Certification available on request.

System Components

	DESCRIPTION	USES
Flowfast Standard Primer	A 2-component low viscosity MMA based primer for concrete and cementitious substrates.	Used for priming concrete, screeds and wood, prior to the installation of Deckshield Rapide or Flowfast resins.
Flowfast Ceramic / Metal Primer	A 2-component low viscosity MMA based primer for metal and ceramic tile substrates.	Used for priming metal and ceramic substrates prior to the installation of Deckshield Rapide or Flowfast resins. Not suitable for non-ferrous metals and Zinc.
Flowfast Damp Primer	A 2-component low viscosity MMA based primer designed for damp cementitious substrates.	Used for priming damp concrete and screeds prior to the installation of Deckshield Rapide or Flowfast resins.
Flowfast Standard Binder	A 2-component, clear, medium viscosity MMA based binder for Flowfast floor coatings.	Used as a binder, primarily in Flowfast systems with decorative aggregates and flakes.
Flowfast Flexible Binder	A 2-component, clear, medium viscosity MMA based elasticised binder for use with Flowfast floor coatings.	Used as a binder in the formulation of flexible membranes and coating systems that are to be exposed to sub zero temperatures.
Flowfast Hot Water / Oil Binder	A 2-component, clear, medium viscosity MMA based binder for Flowfast floor coatings.	Used as a binder in applications exposed to hot water, fats and oils, primarily in Flowfast systems using decorative quartz.
Flowfast Cove Mix	A 2-component, clear, thixotropic MMA based binder for cove details.	Used with Flowfast resins containing quartz aggregates as a binder on cove details. Systems using Flowfast Cove Mix must always be treated with a Flowfast sealer.
Flowfast Standard Seal	A 2-component, UV-resistant, low viscosity MMA based sealer for Flowfast floor coatings.	Used as a general purpose sealer for smooth or lightly textured profiles, primarily in Flowfast systems with decorative aggregates and flakes.
Flowfast Flexible Seal	A 2-component, elastified, UV-resistant, low viscosity MMA based sealer for Flowfast floor coatings.	Used on elasticised Flowfast floor coatings or for outdoor applications.
Flowfast Hot Water / Oil Seal	A 2-component, clear, medium viscosity MMA based sealer for Flowfast floor coatings.	Used as a sealer in applications exposed to hot water, fats and oils, primarily in Flowfast systems using decorative quartz.
Flowfast Cleaner	A clear liquid smoothing aid for the application of Flowfast mortar coatings.	Used to moisten the trowel during application of Flowfast mortar coatings. The product is also an excellent agent for cleaning application tools.
Flowfast F1 Mortar Standard*	A 2-component, ready to use, repair mortar, based on MMA resin — designed for cementitious substrates that have a RH up to 97% (to BS 8204).	Used to repair damage, holes and imperfections in concrete substrates. Can be used in machine bases, joint arises, drill and bolt holes.

*For application in temperatures below 0°C, use Flowfast F1 Mortar Cold Grade (0 to -25°C).
(For full product data information, please contact your local Flowcrete office).

Technical Profile

IMPACT RESISTANCE	
EN ISO 6272	10Nm
TEMPERATURE RESISTANCE	
Tolerant of sustained temperatures up to 50°C	
WATER PERMEABILITY	
Karsten Test	Nil (Impermeable)
SLIP RESISTANCE	
Method described in BS 7976-2 (typical values for 4-S rubber slider)	Dry >40, Wet depends on specification (in accordance with HSE and UKSRG guidelines)
ABRASION RESISTANCE	
BS 8204-2	Class AR2 - Medium duty industrial and commercial
BOND STRENGTH	
> 1.5 MPa (Greater than cohesive strength of 25 N/mm ² concrete)	
SPEED OF CURE (0–30°C)	
Walk On	1 hour
Full Traffic & Chemical Cure	2–3 hours

Flowfast Terroso

A seamless, decorative, durable MMA floor finish that delivers a fast track transformation for commercial and industrial environments.

Comprising a blend of flakes in a choice of swatches, Flowfast Terroso offers extensive design potential with an attractive finish.



Fast cure methyl-methacrylate



Attractive flaked finish



Seamless & easy to clean



Hardwearing, resistant finish

Standard Colours



Black Granite



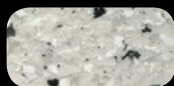
Glacier



Freckle



Frosty



Grey Granite



Moonlite



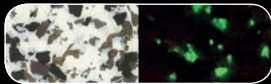
Oyster



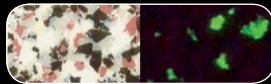
Storm

The applied colours may differ from the examples shown. For a full colour chart and samples, contact your local Flowcrete office.

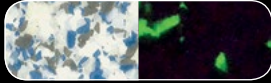
Standard Colours



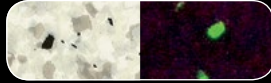
Ash Grey



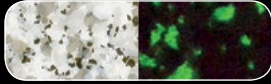
Champagne



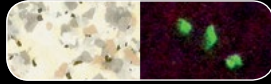
Glacier



Grey Granite

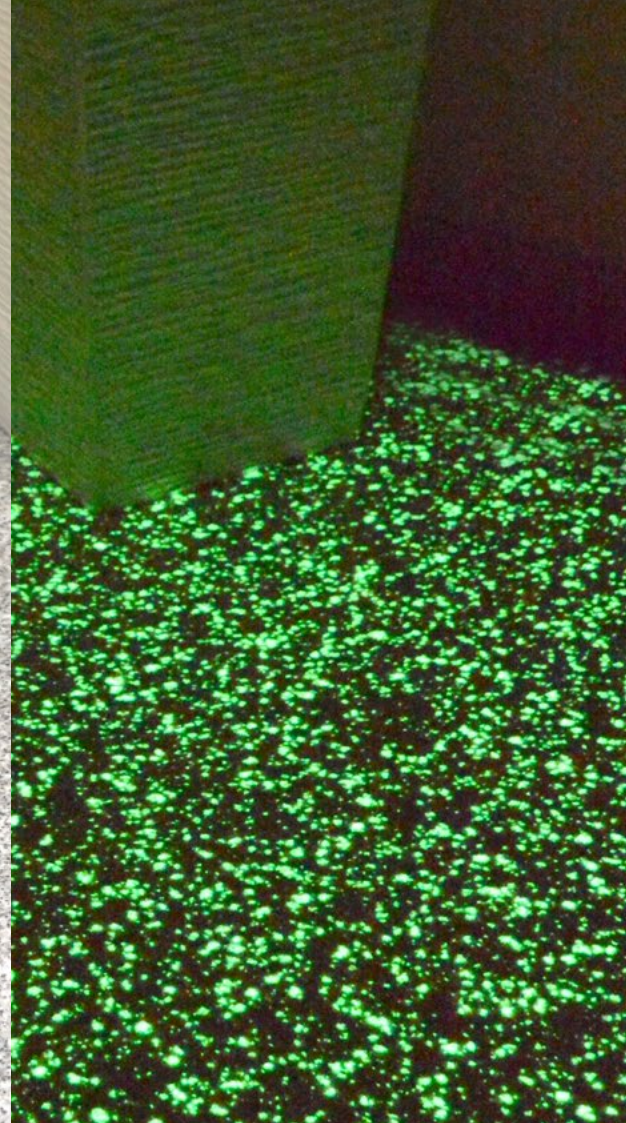


Moonlite



Oyster

The applied colours may differ from the examples shown. For a full colour chart and samples, contact your local Flowcrete office.



Technical Profile

IMPACT RESISTANCE

EN ISO 6272

10Nm

TEMPERATURE RESISTANCE

Tolerant of sustained temperatures up to 50°C

WATER PERMEABILITY

Karsten Test

Nil (Impermeable)

SLIP RESISTANCE

Method described in
BS 7976-2
(typical values for 4-S rubber slider)

Dry >40,
Wet depends on
specification
(in accordance with HSE and
UKSRG guidelines)

ABRASION RESISTANCE

BS 8204-2

Class AR2 - Medium duty
industrial and commercial

BOND STRENGTH

> 1.5 MPa (Greater than cohesive strength of 25 N/mm² concrete)

SPEED OF CURE (0–30°C)

Walk On

1 hour

Full Traffic & Chemical Cure

2–3 hours

For a full Technical Profile, contact your local Technical Department.

Flowfast Glow

A seamless, decorative, MMA floor finish that contains colourful, luminescent flake aggregates.

Flowfast Glow provides an attractive finish that glows in the dark when the lights go out, allowing the creation of luminescent walkways as a safety feature in case of power cuts.



Fast cure methyl-methacrylate



Glow-in-the-dark finish



Seamless & easy to clean



Hardwearing, resistant finish

GRANTS PHARMACY



Flowfast Kristalina

A smooth, sparkling MMA resin floor finish that delivers a fast track decorative flooring solution.

Combining functionality and shimmering style, Flowfast Kristalina can create a luxurious finish that gives the right first impression.



Fast Cure:

MMA additives speed up cure time, reducing construction schedules.



Attractive:

Offers extensive design potential to deliver the wow-factor underfoot.



Versatile:

Can be laid over existing hard surfaces such as tiles, marble or terrazzo.



Seamless:

Delivers a hygienic seam-free surface that is easy to clean and maintain.



Resistant:

Holds its own against impact, traffic and chemical attack.

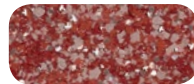
Standard Colours



Azure Blue



Clementine



Cranberry



Dalmation



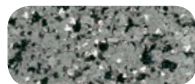
Ebony



Emerald



Gold



Granite



Pacific Blue

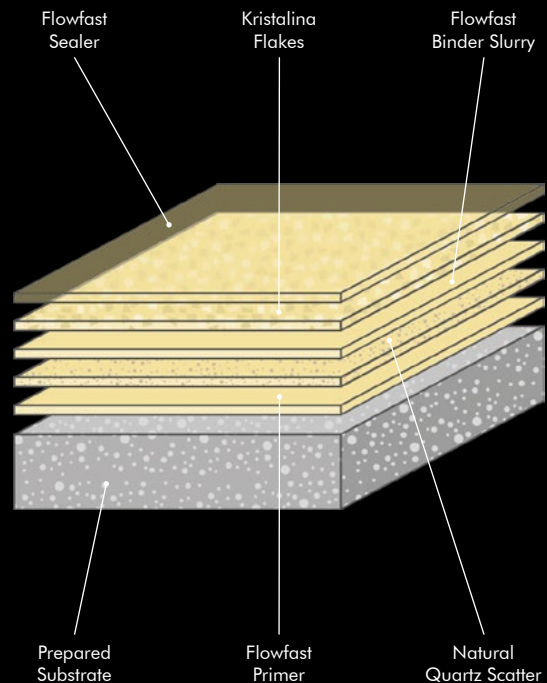


Peacock

The applied colours may differ from the examples shown. For a full colour chart and samples, contact your local Flowcrete office.

Technical Profile

IMPACT RESISTANCE	
EN ISO 6272	10Nm
TEMPERATURE RESISTANCE	
Tolerant of sustained temperatures up to 50°C	
WATER PERMEABILITY	
Karsten Test	Nil (Impermeable)
SLIP RESISTANCE	
Method described in BS 7976-2 (typical values for 4-S rubber slider)	Dry >40, Wet depends on specification (in accordance with HSE and UKSRG guidelines)
ABRASION RESISTANCE	
BS 8204-2	Class AR2 - Medium duty industrial and commercial
BOND STRENGTH	
> 1.5 MPa (Greater than cohesive strength of 25 N/mm ² concrete)	
SPEED OF CURE**	
Walk On	1 hour
Full Traffic & Chemical Cure	2-3 hours



** Cure times at temperatures between 0-30°C can be achieved by altering the quantity of catalyst used. For applications falling outside of this temperature range, please contact your local Flowcrete Technical Department.



Flowfast Quartz

A hard wearing, decorative, fast curing MMA resin floor topping made up of colour stable quartz granules in a clear resin binder.

Ideal for use in both commercial and industrial environments, Flowfast Quartz will stand up to any area of heavy traffic.



Fast Cure:

MMA additives speed up cure time, reducing construction schedules.



Attractive:

Offers extensive design potential to deliver the wow-factor underfoot.



Versatile:

Can be laid over existing hard surfaces such as tiles, marble or terrazzo.



Seamless:

Delivers a hygienic seam-free surface that is easy to clean and maintain.



Resistant:

Holds its own against impact, traffic and chemical attack.

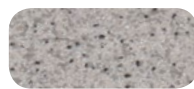
Standard Colours



Dark Grey



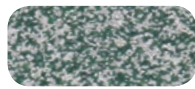
Mid Grey



Light Grey



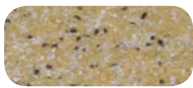
Light Blue



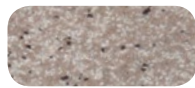
Green



Red



Yellow

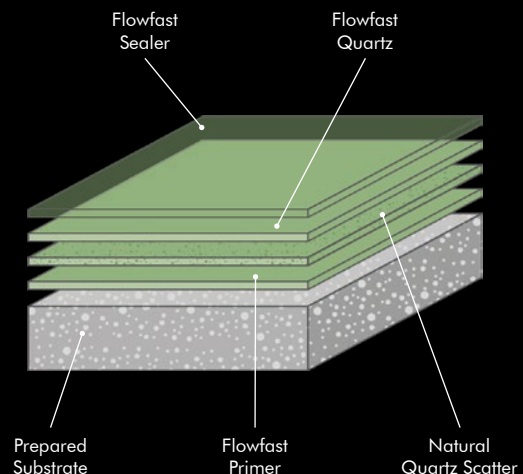


Brown

The applied colours may differ from the examples shown. For a full colour chart and samples, contact your local Flowcrete office.

Technical Profile

COMPRESSIVE STRENGTH	
EN 13892-2	60 N/mm ²
FLEXURAL STRENGTH	
EN 13892-2	20 N/mm ²
TENSILE STRENGTH	
BS 6319	15 N/mm ²
IMPACT RESISTANCE	
EN ISO 6272	10Nm
TEMPERATURE RESISTANCE	
Tolerant of sustained temperatures up to 70°C	
WATER PERMEABILITY	
Karsten Test	Nil (Impermeable)
SLIP RESISTANCE	
Method described in BS 7976-2 (typical values for 4-5 rubber slider)	Dry >40, Wet depends on specification (in accordance with HSE and UKSRG guidelines)
ABRASION RESISTANCE	
BS 8204-2	Class AR1 - Heavy duty industrial and commercial
BOND STRENGTH	
>1.5 MPa (Greater than cohesive strength of 25 N/mm ² concrete)	
SPEED OF CURE**	
Walk On	1 hour
Full Traffic & Chemical Cure	2-3 hours



** Cure times at temperatures between 0-30°C can be achieved by altering the quantity of catalyst used. For applications falling outside of this temperature range, please contact your local Flowcrete Technical Department.



Flowfast Rapid Transit SR

A fast track and fire resistant acrylic resin based flooring system that contains natural quartz aggregates ideal for areas of heavy foot traffic.

Flowfast Rapid Transit SR offers a joint-free and positively textured coloured floor finish with exceptional chemical, wear and slip resistance.



Fast Cure:

MMA additives speed up cure time, reducing construction schedules.



Fire Resistant:

Ideal for use in areas of paramount fire safety. Fire resistant to L.U.L. Section 12.



Seamless:

Delivers a hygienic seam-free surface that is easy to clean and maintain.



Resistant:

Holds its own against impact, traffic and chemical attack.



UV Stable:

Demonstrates excellent resistance to UV light.

Standard Colours



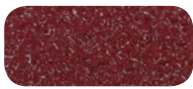
Signal Yellow



Sky Blue



Forest Green



Tile Red



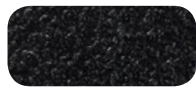
Goosewing Grey



Mid Grey



Dark Grey



Black

The applied colours may differ from the examples shown. For a full colour chart and samples, contact your local Flowcrete office.

Technical Profile

COMPRESSIVE STRENGTH

>40 N/mm²

FLEXURAL STRENGTH

>20 N/mm²

TEMPERATURE RESISTANCE

Tolerant of sustained temperatures up to 50°C

WATER PERMEABILITY

Karsten Test

Nil (Impermeable)

SLIP RESISTANCE

Method described in BS 7976-2 (typical values for 4-S rubber slider)

Dry >40,
Wet depends on specification (in accordance with HSE and UKSRG guidelines)

BOND STRENGTH

> 1.5 MPa (Greater than cohesive strength of 25 N/mm² concrete)

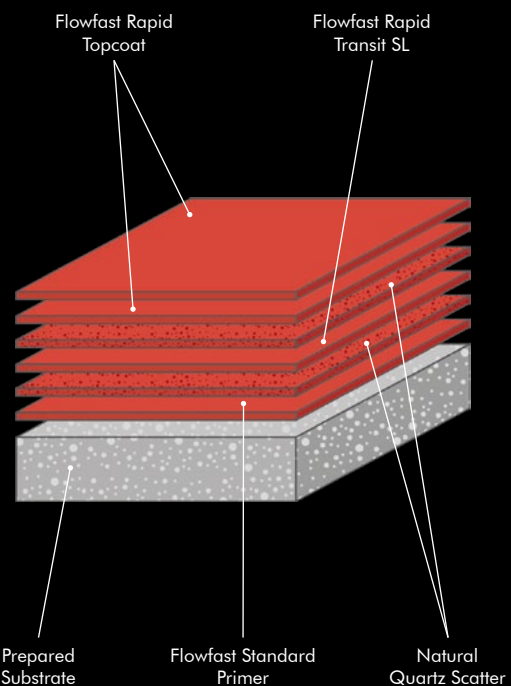
SPEED OF CURE**

Full Traffic

1 hour

Full Chemical Cure

1 hour



** Cure times at temperatures between 0-30°C can be achieved by altering the quantity of catalyst used. For applications falling outside of this temperature range, please contact your local Flowcrete Technical Department.

Flowcrete
for the world at your feet



www.flowcreteasia.com



asia@flowcrete.com