



## MONDÉCO

- ▶ Seamless terrazzo flooring that delivers a stylish surface suited for use in upmarket commercial environments

# Mondéco Seamless Terrazzo Technical Profile

---



Flowcrete's seamless terrazzo flooring range, Mondéco, is the ultimate surface material for commercial environments owing to its eye-catching and durable finish.

Terrazzo flooring dates back to Ancient Rome where its vibrant, wear-resistant and flexible qualities proved popular with forward-thinking architects building the first modern empire.

Fast-forward to the present day, where Flowcrete's take on this impressive flooring solution remains the first-choice for designers across the globe. Offering a mix of aggregates ranging from sparkling crystal mirror glass right through to tough flint and granite chippings, the Mondéco range is the designer's dream for all interior flooring projects.

---

## Application Suitability



Retail



Leisure



Airports



Transport



Offices

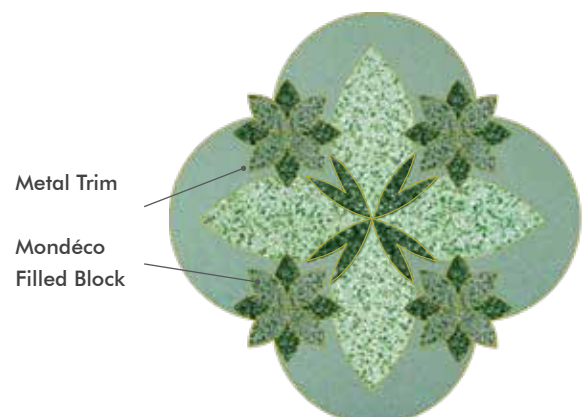


Pharmaceutical

---

## Creative Design Potential

Mondéco can be installed in a variety of complicated patterns using brass or aluminium trims, which are laid on the surface of the floor in a matrix that designates each area of the design. Mondéco is simply used to fill each colour block before the whole surface is ground to reveal the stunning design.



## Technical Profile

FIR RESISTANCE	
EN 13501-1	B <sub>FL</sub> - s1
SLIP RESISTANCE	
Method described in BS 7976-2 (typical values for 4-S rubber slider)	Dry > 40, Wet depends on specification (in accordance with HSE and UKSRG guidelines)
TEMPERATURE RESISTANCE	
Tolerant of sustained temperatures up to 60°C	
WATER PERMEABILITY	
Karsten Test	Nil (Impermeable)
ABRASION RESISTANCE	
BS 8204-2	Grade AR2
COMPRESSIVE STRENGTH	
EN 13892-2	> 55 N/mm <sup>2</sup>
FLEXURAL STRENGTH	
EN 13892-2	> 20 N/mm <sup>2</sup>
TENSILE STRENGTH	
BS 6319	> 10 N/mm <sup>2</sup>

## Mondéco Crystal (6 mm)

A seamless, highly decorative, solvent free, epoxy resin terrazzo floor finish incorporating recycled, clear crystal glass aggregates.

Mondéco Crystal is suitable for airport terminals, shopping centres, hotels, and environments where design and aesthetics are key.



Luxurious, attractive sparkling finish



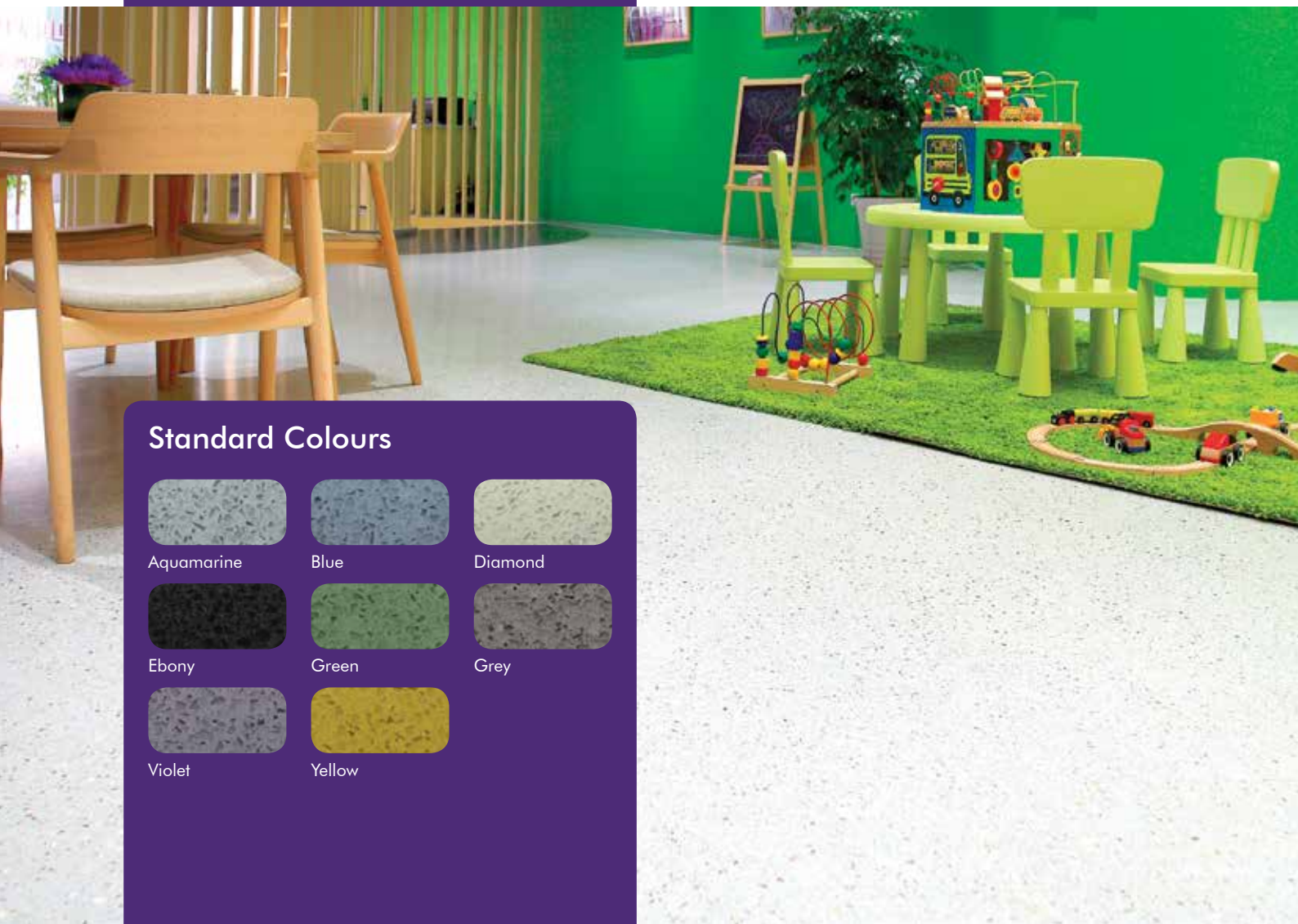
Seamless application for hygiene



Durable for a long lifecycle



Resistant to chemicals and traffic



## Standard Colours



Aquamarine



Blue



Diamond



Ebony



Green



Grey



Violet



Yellow

# Mondéco Splash (6 mm)

A seamless, highly decorative, solvent free, epoxy resin terrazzo floor finish incorporating recycled clear and coloured glass aggregates.

Mondéco Splash is suitable for environments where design and durability are key, such as airport and railway terminals, shopping centres, hotels and restaurants.



### Attractive:

Offers extensive design potential to deliver the wow-factor underfoot.



### Easy to Clean:

Delivers a hygienic seam-free surface that is easy to clean and maintain.



### Durable:

A highly durable finish that delivers an impressive lifecycle.



### Chemical Resistant:

Provides protection against chemicals and corrosive cleaning agents.



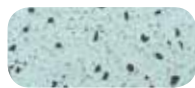
### Resistant:

Holds its own against impact and sustained foot and wheeled traffic.

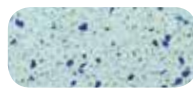
## Standard Colours



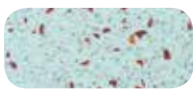
Amber Stone



Black Onyx



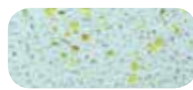
Blue Topaz



Cherry Opal



Emerald

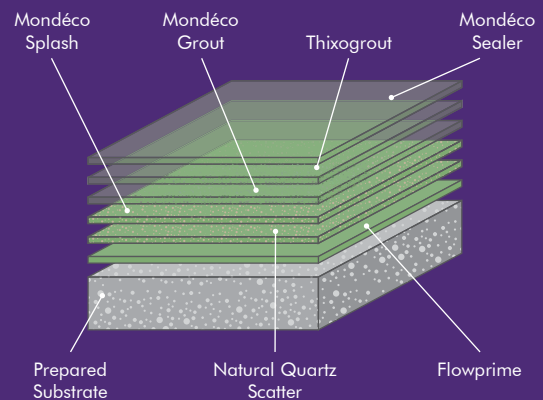


Yellow Sapphire

The applied colours may differ from the examples shown. For a full colour chart and samples, contact your local Flowcrete office.

## Technical Profile

FIRE RESISTANCE			
EN 13501-1	B <sub>FL</sub> - s1		
SLIP RESISTANCE			
Method described in BS 7976-2 (typical values for 4-S rubber slider)	Dry >40, Wet depends on specification (in accordance with HSE and UKSRG guidelines)		
TEMPERATURE RESISTANCE			
Tolerant of sustained temperatures up to 60°C			
WATER PERMEABILITY			
Karsten Test	Nil (Impermeable)		
ABRASION RESISTANCE			
Grade AR2 - Medium duty Industrial and Commercial			
COMPRESSIVE STRENGTH			
EN 13892-2	>55 N/mm <sup>2</sup>		
FLEXURAL STRENGTH			
EN 13892-2	>20 N/mm <sup>2</sup>		
TENSILE STRENGTH			
BS 6319	>10 N/mm <sup>2</sup>		
BOND STRENGTH			
>1.5 MPa*			
SPEED OF CURE**	10°C	20°C	30°C
Light Traffic	24 hrs	20 hrs	16 hrs
Full Traffic	72 hrs	48 hrs	36 hrs
Full Chemical Cure	12 days	7 days	6 days



\*Assumes concrete compressive strength is greater than 25N/mm<sup>2</sup>

\*\* Cure times at temperatures between 0-30°C can be achieved by altering the quantity of catalyst used. For applications falling outside of this temperature range, please contact your local Flowcrete Technical Department.



## Application Suitability

Food & drink	
Pharmaceutical	✓
Engineering	
Offices	✓
Chemical processing	
Manufacturing	
Retail environments	✓
Transport	✓
Stadia	✓
Education	✓
Airports	✓
Healthcare	✓

# Mondéco Earth (6 mm)

A seamless, highly decorative, solvent free, epoxy resin terrazzo floor finish incorporating granite and flint aggregates.

Mondéco Earth is aesthetically pleasing whilst also being suitable for environments where hygiene, chemical resistance and durability are key, such as pharmaceutical production and process areas.



### Attractive:

Offers extensive design potential to deliver the wow-factor underfoot.



### Easy to Clean:

Delivers a hygienic seam-free surface that is easy to clean and maintain.



### Durable:

A highly durable finish that delivers an impressive lifecycle.



### Chemical Resistant:

Provides protection against chemicals and corrosive cleaning agents.



### Resistant:

Holds its own against impact and sustained foot and wheeled traffic.

## Standard Colours



Almond



Blueberry



Chilli Pepper



Coconut



Kiwi



Peach



Pomegranate

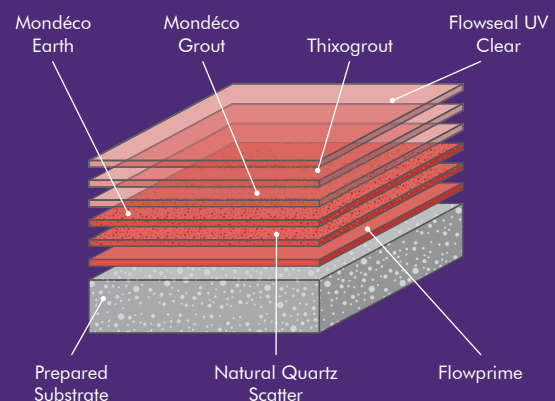


Tangerine

The applied colours may differ from the examples shown. For a full colour chart and samples, contact your local Flowcrete office.

## Technical Profile

FIRE RESISTANCE			
EN 13501-1	B <sub>FL</sub> - s1		
SLIP RESISTANCE			
Method described in BS 7976-2 (typical values for 4-S rubber slider)	Dry >40, Wet depends on specification (in accordance with HSE and UKSRG guidelines)		
TEMPERATURE RESISTANCE			
Tolerant of sustained temperatures up to 60°C			
WATER PERMEABILITY			
Karsten Test	Nil (Impermeable)		
ABRASION RESISTANCE			
Taber Abrader	50 mg loss per 1000 cycles (1 kg load using CS17 wheels)		
COMPRESSIVE STRENGTH			
EN 13892-2	>55 N/mm <sup>2</sup>		
FLEXURAL STRENGTH			
EN 13892-2	>20 N/mm <sup>2</sup>		
TENSILE STRENGTH			
BS 6319	>10 N/mm <sup>2</sup>		
BOND STRENGTH			
>1.5 MPa*			
SPEED OF CURE**	10°C	20°C	30°C
Light Traffic	24 hrs	20 hrs	16 hrs
Full Traffic	72 hrs	48 hrs	36 hrs
Full Chemical Cure	12 days	7 days	6 days



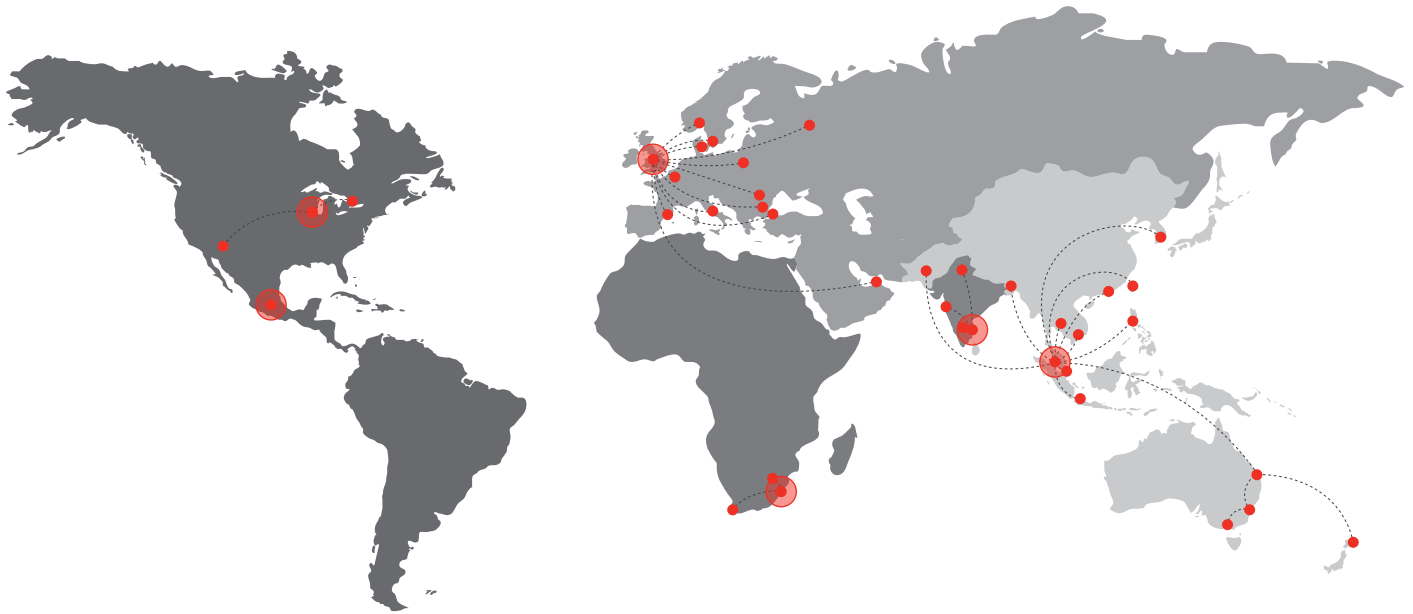
\*Assumes concrete compressive strength is greater than 25N/mm<sup>2</sup>

\*\* Cure times at temperatures between 0-30°C can be achieved by altering the quantity of catalyst used. For applications falling outside of this temperature range, please contact your local Flowcrete Technical Department.



## Application Suitability

Food & drink	
Pharmaceutical	✓
Engineering	
Offices	✓
Chemical processing	
Manufacturing	
Retail environments	✓
Transport	✓
Stadia	✓
Education	✓
Airports	✓
Healthcare	✓



## Flowcrete

World leader in seamless resin flooring solutions and other specialist coatings.

### Africa

South Africa +27 31 701 0017 southafrica@flowcrete.com

### Asia Pacific (APAC)

Australia	+61 7 3205 7115	australia@flowcrete.com
Bangladesh	+603 6277 9575	bangladesh@flowcrete.com
Hong Kong	+852 2795 0478	hongkong@flowcrete.com
Indonesia	+62 21 252 3201	indonesia@flowcrete.com
Korea	+60 3 6277 9575	korea@flowcrete.com
Malaysia	+60 3 6277 9575	asia@flowcrete.com
New Zealand	+64 7 541 1221	newzealand@flowcrete.com
Pakistan	+60 3 6277 9575	pakistan@flowcrete.com
Philippines	+63 2 834 6506	philippines@flowcrete.com
Singapore	+65 6848 7166	singapore@flowcrete.com
Taiwan	+60 3 6277 9575	taiwan@flowcrete.com
Thailand	+66 2539 3424	thailand@flowcrete.com
Vietnam	+84 28 6287 0846	vietnam@flowcrete.com

## Europe & Middle East (EME)

Bulgaria	+359 898 61 58 31	bulgaria@flowcrete.com
Denmark	+46 435 40 01 10	denmark@flowcrete.com
France	+33 1 60 61 74 42	france@flowcrete.com
Italy	+39 339 4853258	italy@flowcrete.com
Norway	+47 6486 0830	norway@flowcrete.com
Poland	+48 22 879 8907	poland@flowcrete.com
Romania	+40 766 596 991	romania@flowcrete.com
Russia	+7 916 931 3513	russia@flowcrete.com
Spain	+34 937 07 0872	spain@flowcrete.com
Sweden	+46 435 40 01 10	sweden@flowcrete.com
Turkey	+90 212 2946570	turkey@flowcrete.com
UAE	+971 4 347 0460	uae@flowcrete.com
UK	+44 (0) 1270 753 000	uk@flowcrete.com

### India

India +91 44 40176600 india@flowcrete.com

## North America

Canada	+1 877-210-2444	canada@flowcrete.com
Mexico	+55 44 40 94 00	mexico@flowcrete.com
USA	+1 513-943-4225	americas@flowcrete.com

\*Whilst every care has been taken to ensure that the information included in this document was accurate at the time of printing, Flowcrete reserves the right to change product specifications at any time without prior notice. The photographs and colours reproduced in this publication are within the constraints of the printing process and are not to be used for matching purposes. All photographs are used for approximate representation only and may not show the actual products on offer. E&OE.