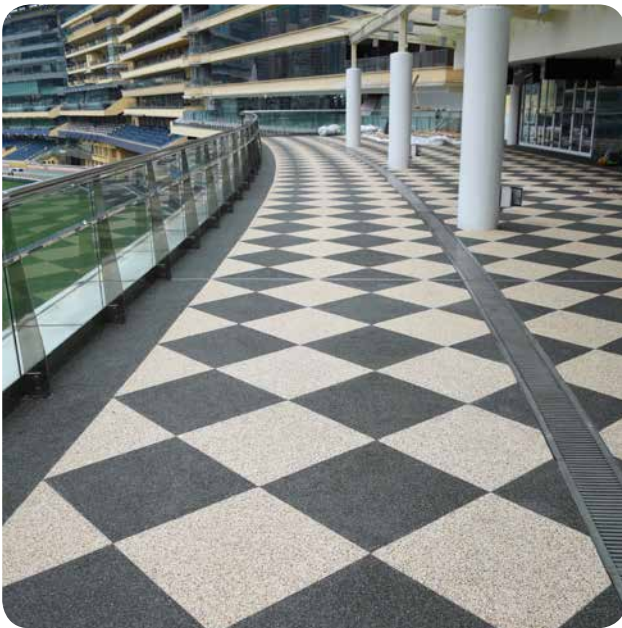


### Rustik UV (6mm)



#### Description

Rustik UV is a colourful natural stones encapsulated in a clear aliphatic, UV stable polyurethane resin to produce an attractive floor finish suitable for outdoor environment.

#### Uses

Rustik UV has been designed to ensure that walkways and external concourse areas reflect the natural beauty of the outdoors. Rustik UV is ideally suited to outdoor environments subject to heavy foot traffic such as leisure complexes, theme parks, holiday resorts or other public points of interest.

#### Benefits

- Attractive natural stone finish
- UV stable; suitable for outdoor environment
- High chemical resistance
- Noise reduction (footsteps)
- Capable of withstanding heavy foot traffic
- Offers a durable alternative to loose stone and/or pebblewash
- Offers a seamless and flexible design
- Easily cleaned and maintained

#### Standard Colour Chart



Burnt Amber



Grey Moonstone



Jasper



White Sapphire

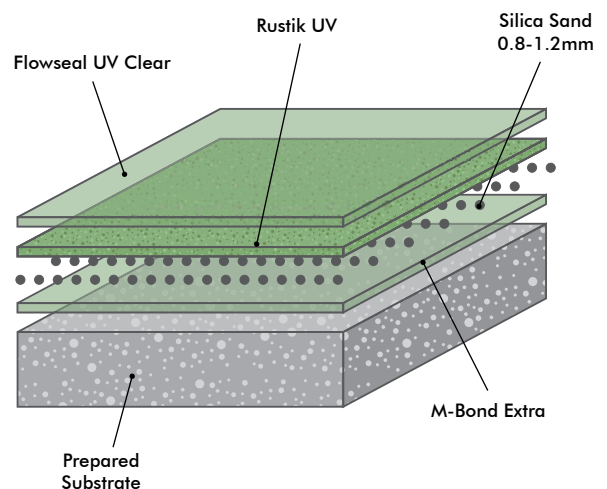


Black Sapphire



Smokey Quartz

#### System Design



## Model Specification

System: Rustik UV  
Finish: Natural Stone  
Thickness: 6mm  
Preparatory work and application in accordance with manufacturer's instructions.

## Substrate Requirements

Concrete or screed substrate should be a minimum of 25 N/mm<sup>2</sup>, free from laitance, dust and other contamination. The substrate should be dry up to 75% RH as per BS8204 and free from rising damp and ground water pressure. To produce the required aesthetic effect a smooth, level substrate is required. Contact Flowcrete for more advice.

## Products Included in this System

M-Bond Extra  
Silica Sand 0.8-1.2mm  
Rustik UV  
Flowseal UV Clear

Detailed application instructions are available upon request.

## Installation Service

The installation should be carried out by a Flowcrete approved applicator with a documented quality assurance scheme. Obtain details of our approved contractors by contacting our customer service team or enquiring via our website at [www.flowcreteasia.com](http://www.flowcreteasia.com)

## Environmental Considerations

The finished system is assessed as non-hazardous to health and the environment. The long service life and seamless surface reduce the need for repairs, maintenance and cleaning. Environmental and health considerations are controlled during manufacture and application of the products by Flowcrete staff and fully trained and experienced contractors.

## Aftercare - Cleaning and Maintenance

Clean regularly using a single or double headed rotary scrubber drier in conjunction with a mildly alkaline detergent.

## Important Note

Flowcrete's products are guaranteed against defective materials and manufacture and are sold subject to its standard Terms and Conditions of Sale, copies of which can be obtained on request.

## Technical Information

The figures that follow are typical properties achieved in laboratory tests at 20°C and at 50% Relative Humidity.

Slip Resistance Method described in BS 7976-2 (typical values for 4-S rubber slider)	Dry > 40, Wet depends on specification (in accordance with HSE and UKSRG guidelines)
--	---

The slipperiness of flooring materials can change significantly, due to the installation process, after short periods of use, due to inappropriate maintenance, longer-term wear and/or surface contaminants (wet or dry)

Textured systems are recommended to meet slip resistance value requirements for wet conditions and/or surface contaminants (wet or dry) - please contact our Technical Advisors for further details and specifications.

Temperature Resistance	Tolerant of sustained temperatures up to 65°C	
Chemical Resistance	Contact Technical Department	
Compressive Strength	> 30 N/mm <sup>2</sup> (BS 6319)	
Bond Strength	Greater than cohesive strength of 25 N/mm <sup>2</sup> concrete. > 1.5 MPa.	

## Speed of Cure

	10°C	20°C	30°C
Light Traffic	36 hrs	24 hrs	16 hrs
Full traffic	72 hrs	48 hrs	36 hrs
Full chemical cure	12 days	7 days	6 days

## Customer Service

For more information regarding this product please contact your local Flowcrete office:

Flowcrete Asia	+60 3 6277 9575
Flowcrete Hong Kong	+852 2795 0478
Flowcrete China	+86 10 8472 1912
Flowcrete Thailand	+66 2539 3424
Flowcrete Indonesia	+62 21 252 3201
Flowcrete Vietnam	+84 8 6287 0846

Visit our website for more locations.

## Further Information

To ensure you are specifying a fit for purpose flooring for your project please consult our Technical Advisors on the numbers above or visit our website to register your interest in specifying one of the most durable floors on the market.