

Flowfast Kristalina



Description

Flowfast Kristalina is a decorative, smooth, sparkling methyl methacrylate (MMA) resin floor finish ideal for a modern contemporary environment. Flowfast Kristalina has been developed to enable very fast track applications, therefore dramatically reducing down time.

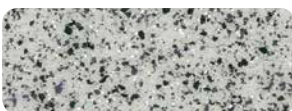
Uses

Ideal for public areas, shops, department stores, restaurants, garden centres, discos, casinos, trendy bars and cafes, museums and art galleries where time for floor repairing and resurfacing is limited.

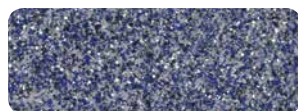
Benefits

- Fast curing and rapid installation
- Can be overlaid onto existing ceramic tiles, marble, granite, terrazzo or timber floors
- Glittering attractive floor finish
- Modern and contemporary appearance
- Seamless and hygienic finish
- Hard-wearing
- High scratch resistance
- High chemical resistance
- Easy to clean and maintain

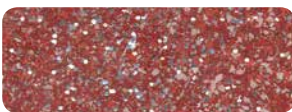
Standard Colour Chart



Dalmatian



Azure Blue



Cranberry



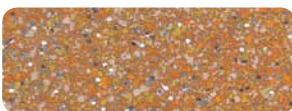
Emerald



Granite



Ebony



Clementine



Gold

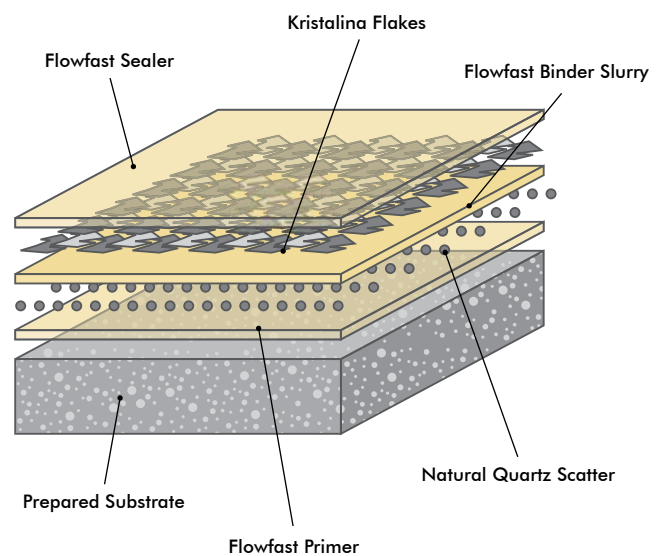


Pacific Blue



Peacock

System Design



Model Specification

System: Flowfast Kristalina
Finish: Satin
Thickness: Dependant on specification
Preparatory work and application in accordance with manufacturer's instructions.

Substrate Requirements

Concrete or screed substrate should be a minimum of 25N/mm², free from laitance, dust and other contamination. The substrate should be dry up to 75% RH as per BS8204 and free from rising damp and ground water pressure. A special Flowfast primer can be used for substrates up to 100% RH (surface dry).

Products Included in this System

Flowfast Standard Primer
Natural Quartz 0.4-0.8mm
Flowfast Standard Binder Slurry
Flowfast Kristalina Flakes
Flowfast Standard Seal

Consult individual Product Data sheets for information on Flowfast Catalyst levels.

Graded aggregate can be incorporated in the sealer to provide better slip resistance.

Detailed application instructions are available upon request.

Installation Service

The installation should be carried out by a Flowcrete approved applicator with a documented quality assurance scheme. Obtain details of our approved contractors by contacting our customer service team or enquiring via our website at www.flowcreteasia.com

Environmental Considerations

The finished system is assessed as non-hazardous to health and the environment. The long service life and seamless surface reduce the need for repairs, maintenance and cleaning. Environmental and health considerations are controlled during manufacture and application of the products by Flowcrete staff and fully trained and experienced contractors.

Aftercare - Cleaning and Maintenance

Clean floor regularly using a rotary scrubber in conjunction with a mildly alkaline detergent (without solvent).

Important Note

Flowcrete's products are guaranteed against defective materials and manufacture and are sold subject to its standard Terms and Conditions of Sale, copies of which can be obtained on request.

Technical Information

The figures that follow are typical properties achieved in laboratory tests at 20°C and at 50% Relative Humidity.

| | |
|--|--|
| Slip Resistance Method described in BS 7976-2 (typical values for 4-S rubber slider) | Dry >40, Wet depends on specification (in accordance with HSE and UKSRG guidelines) |
|--|--|

The slipperiness of flooring materials can change significantly, due to the installation process, after short periods of use, due to inappropriate maintenance, longer-term wear and/or surface contaminants (wet or dry)

Textured systems are recommended to meet slip resistance value requirements for wet conditions and/or surface contaminants (wet or dry) - please contact our Technical Advisors for further details and specifications.

| | |
|------------------------|---|
| Impact Resistance | 10Nm (EN ISO 6272) |
| Abrasion Resistance | BS 8204-2 Class AR2 - Medium duty industrial and commercial |
| Temperature Resistance | Tolerant of sustained temperatures up to 50°C |
| Water Permeability | Nil – Karsten test (impermeable) |
| Chemical Resistance | Contact Technical Department Good resistance to tea, coffee, cola, fruit juice, soaps and bleach. |
| Bond Strength | Greater than cohesive strength of 25 N/mm ² concrete. >1.5 MPa. |

Complies with BS 8204-6/FeRFA type 4.

Speed of Cure (per coat)

| | |
|------------------------------|-------------|
| Walk on | 1 hour |
| Full traffic & chemical cure | 2 - 3 hours |

Cure at ambient temperatures in the range 0°C to 30°C can be achieved by altering the quantity of catalyst used. For applications below 0°C, please consult our Technical Department.

Customer Service

For more information regarding this product please contact your local Flowcrete office:

| | |
|---------------------|------------------|
| Flowcrete Asia | +60 3 6277 9575 |
| Flowcrete Hong Kong | +852 2795 0478 |
| Flowcrete China | +86 10 8472 1912 |
| Flowcrete Thailand | +66 2539 3424 |
| Flowcrete Indonesia | +62 21 252 3201 |
| Flowcrete Vietnam | +84 8 6287 0846 |

Visit our website for more locations.

Further Information

To ensure you are specifying a fit for purpose flooring for your project please consult our Technical Advisors on the numbers above or visit our website to register your interest in specifying one of the most durable floors on the market.