

Urban Expressions (Single Tone)



Description

Urban Expressions is a smooth and understated single tone polyurethane resin floor finish that works in a wide range of modern commercial settings.

Uses

Forming part of the Expressions range, Urban Expressions is a popular choice for commercial clients looking to impress underfoot. Suited to retail stores, fashion boutiques, restaurant, bars and other commercial premises, the system comes in a range of subtle colour ways to enhance the mood of any setting.

Benefits

- Decorative solid colour finish
- Natural artistic design finish
- Smooth, satin finish
- Seamless hygienic finish
- Exceptional wear resistance
- Easy to clean and maintain
- Chemical resistant
- No cracking due to shrinkage
- Resilient underfoot

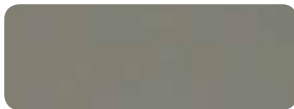
Standard Colour Chart



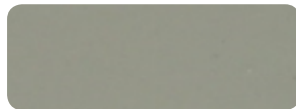
Smokey Grey



Dusty Grey



Morning Coffee



Old Gold

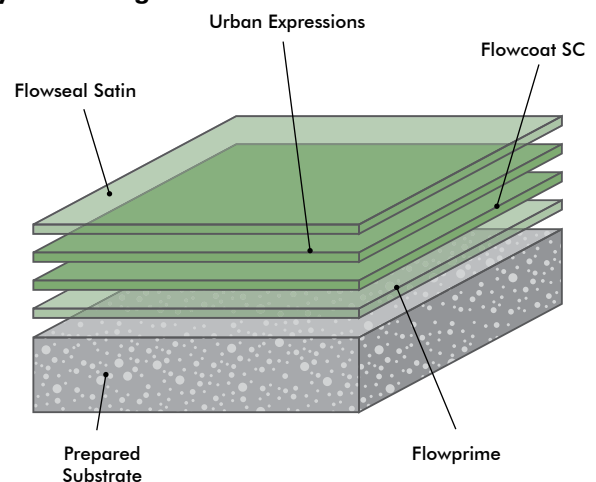


Midnight Green



Slate Grey

System Design



Model Specification

System: Urban Expressions (Single Tone)
Finish: Satin
Thickness: Dependant on Specification
Preparatory work and application in accordance with manufacturer's instructions.

Substrate Requirements

Concrete or screed substrate should be a minimum of 25N/mm², free from laitance, dust and other contamination. The substrate should be dry to 75% RH as per BS8204 and free from rising damp and ground water pressure.

Products Included in this System

Flowprime
Flowcoat SC
Urban Expressions (Single Tone)
Flowseal Satin

Detailed application instructions are available upon request.

Installation Service

The installation should be carried out by a Flowcrete approved applicator with a documented quality assurance scheme. Obtain details of our approved contractors by contacting our customer service team or enquiring via our website at www.flowcreteasia.com

Environmental Considerations

The finished system is assessed as non-hazardous to health and the environment. The long service life and seamless surface reduce the need for repairs, maintenance and cleaning. Environmental and health considerations are controlled during manufacture and application of the products by Flowcrete staff and fully trained and experienced contractors.

Aftercare - Cleaning and Maintenance

Clean regularly using a single or double headed rotary scrubber drier in conjunction with a mildly alkaline detergent.

Important Note

Flowcrete's products are guaranteed against defective materials and manufacture and are sold subject to its standard Terms and Conditions of Sale, copies of which can be obtained on request.

Colour Stability

Urban Expressions is not colour fast and may change colour over time (exhibits a yellowing effect). Colour change depends on the UV light and heat levels present and hence the rate of change cannot be predicted. This is more noticeable in light colours and blues but does not compromise the product's chemical resistance or physical characteristics. Consult our Technical Department for UV light stable specification.

Technical Information

The figures that follow are typical properties achieved in laboratory tests at 20°C and at 50% Relative Humidity.

Fire Resistance	B _{FL} - s1 (EN 13501-1)
Slip Resistance	Dry > 40, Wet depends on specification (in accordance with HSE and UKSRG guidelines)

The slipperiness of flooring materials can change significantly, due to the installation process, after short periods of use, due to inappropriate maintenance, longer-term wear and/or surface contaminants (wet or dry)

Textured systems are recommended to meet slip resistance value requirements for wet conditions and/or surface contaminants (wet or dry) - please contact our Technical Advisors for further details and specifications.

Temperature Resistance	Tolerant up to 60°C
Water Permeability	Nil - Karsten test (impermeable)
Surface Hardness	65 (Shore D)
Chemical Resistance	Contact Technical Department
Abrasion Resistance	Taber Abrader: 80mg loss per 1000 cycles (1 kg load using CS17 wheels)
Flexural Strength	> 15 N/mm ² (BS 6319)
Tensile Strength	> 10 N/mm ² (BS 6319)
Tear Strength	11 MPa (BS 6319)
Bond Strength	Greater than cohesive strength of 25 N/mm ² concrete. > 1.5 MPa.

Speed of Cure

	10°C	20°C	30°C
Light Traffic	36 hrs	24 hrs	12 hrs
Full traffic	72 hrs	48 hrs	24 hrs
Full chemical cure	12 days	7 days	6 days

Customer Service

For more information regarding this product please contact your local Flowcrete office:

Flowcrete Asia	+60 3 6277 9575
Flowcrete Hong Kong	+852 2795 0478
Flowcrete China	+86 10 8472 1912
Flowcrete Thailand	+66 2539 3424
Flowcrete Indonesia	+62 21 252 3201
Flowcrete Vietnam	+84 8 6287 0846

Visit our website for more locations.

Further Information

To ensure you are specifying a fit for purpose flooring for your project please consult our Technical Advisors on the numbers above or visit our website to register your interest in specifying one of the most durable floors on the market.